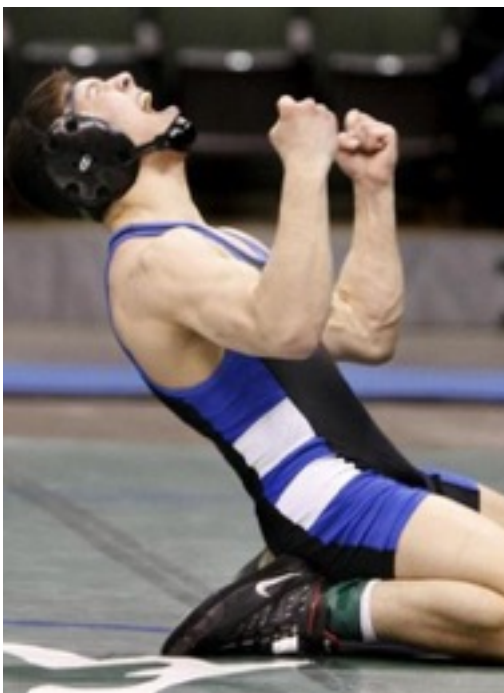




A caring community passionate about connecting people to Jesus Christ



Making Disciples Who Make Disciples



Nate Thomas

Born: September 22, 1994 (age 20)
Mantorville, MN

Weight: 133 lbs.

“Corey, I want to leave a legacy behind outside my wrestling career. I want to use my platform to share Christ with my teammates.”



COMPETITION

There is real competition for the minds and hearts of men and women.

STUDENTS TODAY FACE MANY CHALLENGES



Millennials (30yrs and under)

2 in 10 Believe Church is Important

1 in 3 Take an Anti-Church Stance

59% of Millennials Who Grew Up in Church Dropped Out

50% of the World's Population < 30 Years Old



UNIVERSITY OF MINNESOTA

Minneapolis, MN

Enrollment: 69,221

NCAA Teams: 25

Professing Christians: 4%

Barna Group is a visionary research and resource company located in Ventura, California. Started in 1984, the firm is widely considered to be a leading research organization focused on the intersection of faith and culture.

STUDENTS TODAY FACE MANY CHALLENGES



“A national study of college student drinking found that athletes have significantly higher rates of heavy drinking than non-athletes.”

—THE CENTER FOR ALCOHOL AND DRUG ABUSE AND VIOLENCE PREVENTION

“Jesus has changed my life. He is far better than any gold medals I have won and brings a fulfillment in my life that I been searching for in all the wrong places. God is truly great.”

—NICK WANZEK, WRESTLER AT UNIVERSITY OF MINNESOTA



““Why do I have four Super Bowl rings and still think there is something greater out there for me? I think, God, there has got to be more than this. I wish I knew. I wish I knew.”

—TOM BRADY, NFL PLAYER





BUT
GOD

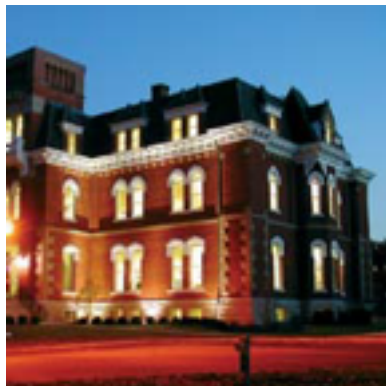
In the face of these competitive forces,
God is bringing an increasing number of
students into a relationship with Himself.



MY STORY

ATHLETES IN ACTION MINISTRIES

CAMPUS
PRO
SPORT TEAMS
INTERNATIONAL
HOME OFFICE
SPORTS COMPLEX
MEDIA





REACHING PEOPLE



WE REACH PEOPLE IN THE FOLLOWING WAYS:

Small Group Evangelism & Discipleship

Monthly Training Table

Ultimate Training Camp

Chapel

Bible Study

Large Group Outreaches (High Schools)

Sport Team Tours

International Partnership (Puerto Rico)

WIN, BUILD, SEND

WIN:

We introduce athletes to Jesus.



BUILD:

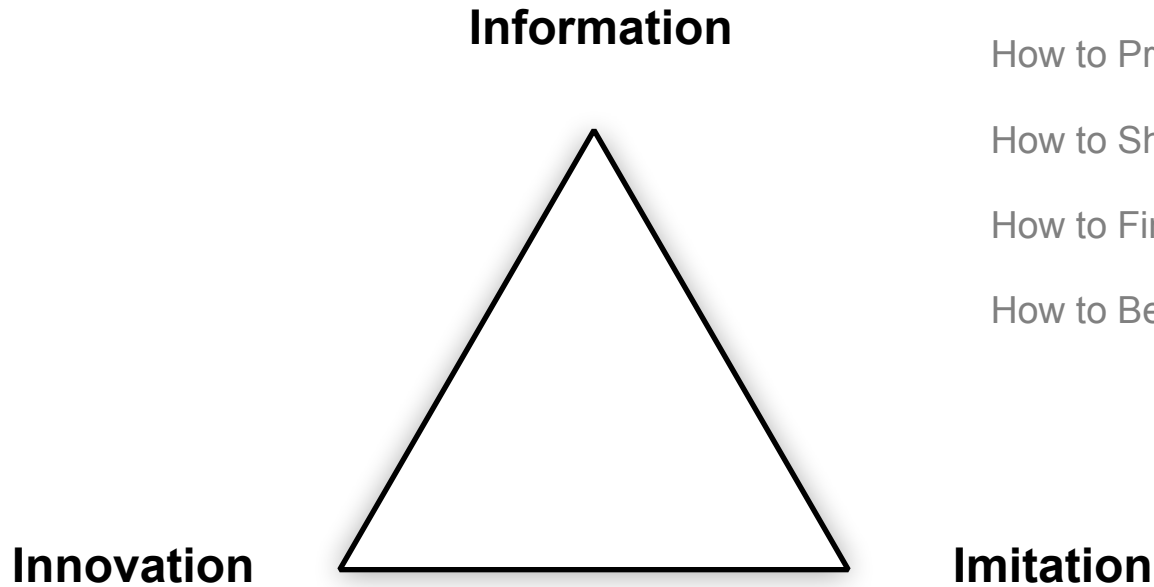
We equip athletes grow in their relationship with God.



SEND:

We send athletes to show Jesus to the world.

DISCIPLESHIP



God Says About Himself

God Says About Us

How to read the Bible

How to Pray

How to Share Your Faith

How to Find a Church

How to Be Filled with the Spirit

DISCIPLESHIP // APPRENTICESHIP

RELATIONSHIP
TIME



MISSION

“Making Disciples Who Make Disciples”



We want to see a Christ follower on every team, in every sport and in every nation so each person has an opportunity to hear about Jesus and respond to His offer of life everlasting.

ATHLETES IN ACTION U of M



2007

2 coaches
0 students
0 teams



2015

10 AIA staff
19 Teams have disciples
24 Weekly Discipleship Groups
14 Students discipling others
124 Gophers disciplined
269 Gospel Exposures (2014)
26 Responded Christ (2014)



OUR PAST

This is the couple who started Cru on the UCLA campus in 1951 – *Bill and Vonette Bright.*



Cru has no central funds for paying salaries and ministry expenses.

Like many other mission organizations, Cru depends upon the consistent financial support of concerned individuals and churches.

These contributions are used to fund the ministries of our staff members.



CRU's DESIGN

We must find a team of people who will partner with us

...to work and trust God to see God change lives with the love and truth of Jesus Christ.

...who will give \$100, \$200, or \$500 monthly or some other amount to support our ministry.



COMMITMENT TO THE TEAM

Invest the best years our lives to go after the mission.

Regularly let you know how God is blessing the ministry.

To be financially faithful with the funds given for our ministry.

Share prayer concerns with one another



TEAM COMMITMENT

Your partnership can make a difference in reaching people for Christ.

1. **First**, would you partner with us and together to work and trust God to see lives changed by Jesus.
2. And **specifically** as a partner, would you financially support Corey Hodowanic with Athletes in Action by giving \$100, \$200, or \$500 a month as we go after Making Disciples Who Make Disciples?





There's another vital way you can help...



A caring community passionate about connecting people to Jesus Christ



Making Disciples Who Make Disciples